

# Diagnosis and management of paroxysmal nocturnal hemoglobinuria

Charles Parker, Mitsuhiro Omine, Stephen Richards, Jun-ichi Nishimura, Monica Bessler, Russell Ware, Peter Hillmen, Lucio Luzzatto, Neal Young, Taroh Kinoshita, Wendell Rosse, and Gerard Socié, for the International PNH Interest Group

The primary clinical manifestations of paroxysmal nocturnal hemoglobinuria (PNH) are hemolytic anemia, marrow failure, and thrombophilia. However, PNH is not a simple binary diagnosis and both flow cytometric characterization of glycosyl phosphatidylinositol-anchored protein expression on peripheral blood cells and marrow analysis are required for comprehensive disease classification. For optimum management, the contribution of both hemolysis and marrow failure to the complex anemia of PNH should be determined. Complement inhibition by eculizumab is a promising new approach to treating the hemolytic anemia. Stem cell transplantation is potentially curative, but the decision on use is best made on a case-by-case basis because of the heterogeneous natural history of the disease. PNH clone size and ethnic/geographic factors appear to influence thrombophilic propensity, but a consensus on prophylactic anticoagulation has not been reached. Involvement of unusual sites (hepatic, mesenteric, cerebral, dermal veins) is characteristic of the thrombophilia of PNH. Indefinite anticoagulation is recommended following a thromboembolic event and thrombolytic therapy should be considered for acute hepatic vein thrombosis (Budd-Chiari syndrome). Pregnancy in a patient with PNH is complicated and requires careful management including prophylactic anticoagulation. To obtain a broad overview of the natural history, approaches to management, and outcome, the International PNH Registry was recently established.

## Definition and diagnostic criteria

### Definition

PNH is a consequence of nonmalignant clonal expansion of one or several hematopoietic stem cells that have acquired a somatic mutation of *PIGA*. Progeny of affected stem cells are deficient in glycosyl phosphatidylinositol-anchored proteins (GPI-APs). Deficiency of the GPI-anchored complement regulatory proteins CD55 and CD59 accounts for the intravascular hemolysis that is the primary clinical manifestation of the disease. PNH frequently arises in association with disorders of bone marrow failure,

particularly aplastic anemia. Thrombophilia is a major cause of morbidity and mortality in PNH.

### Classification

A scheme that incorporates variations in the presenting features, clinical manifestations, and natural history among patients with PNH was developed (Table 1). Continued investigation may necessitate modification of the proposed 3 subcategories, but for now, they serve as a working classification that provides a common language for the field.

**Classic PNH.** Patients with classic PNH have clinical evidence of intravascular hemolysis (reticulocytosis, abnormally high concentration of serum lactate dehydrogenase [LDH] and indirect bilirubin, and abnormally low concentration of serum haptoglobin) but have no evidence of another defined bone marrow abnormality. A cellular marrow with erythroid hyperplasia and normal or near-normal morphology, but without nonrandom karyotypic abnormalities, is consistent with classic PNH.

**PNH in the setting of another specified bone marrow disorder.** The patients in this subcategory have clinical and laboratory evidence of hemolysis but also have concomitantly, or have had a history of, a defined underlying marrow abnormality. Bone marrow analysis and cytogenetics are used to determine if PNH arose in association with aplastic anemia, myelodysplastic syndrome (MDS), or other myelopathy (eg, myelofibrosis). Standard criteria are used for diagnosis of the bone marrow abnormality (eg, aplastic anemia, MDS, or myelofibrosis). Finding nonrandom karyotypic abnormalities that are associated with a specific bone marrow abnormality may contribute diagnostically (eg, abnormalities of chromosomes 5q, 7, and 20q are associated with MDS).

**Subclinical PNH (PNH-sc).** Patients with PNH-sc have no clinical or laboratory evidence of hemolysis. Small populations of GPI-AP-deficient hematopoietic cells (peripheral blood erythrocytes, granulocytes, or both) are detected by very sensitive flow cytometric analysis. PNH-sc is observed in association with bone marrow failure syndromes, particularly aplastic anemia and refractory anemia-MDS.

From the Division of Hematology, University of Utah School of Medicine and the George E. Whalen VA Medical Center, Salt Lake City, UT; the Department of Medicine, Division of Hematology, Showa University Fujigaoka Hospital, Kanagawa, Japan; the Research Committee for the Idiopathic Hematopoietic Disorders, Ministry of Health, Labor, and Welfare, Government of Japan; HMDS, Leeds Teaching Hospitals NHS Trust, Leeds, United Kingdom; Duke University Medical Center, Department of Medicine, Division of Cellular Therapy, and the Duke University School of Medicine, Durham, NC; the Division of Hematology, Washington University School of Medicine, St Louis, MO; the Division of Hematology, St Jude Children's Research Hospital, Memphis, TN; 1st Nazionale per la Ricerca sul Cancro, Genova, Italy; the Hematology Branch, National Institutes of Health, Bethesda, MD; the Research Institute for Microbial Diseases, Osaka University, Osaka, Japan; and Service d'Hématologie Greffe de Moelle, Hospital Saint Louis, Paris, France.

Submitted April 27, 2005; accepted July 19, 2005. Prepublished online as *Blood* First Edition Paper, July 28, 2005; DOI 10.1182/blood-2005-04-1717.

Supported in part by the Health and Labor Sciences Research Grants for Research on Measures for Intractable Diseases, Ministry of Health, Labor, and Welfare, Japan (M.O. and T.K.); by the Japan Intractable Diseases Research Foundation and the Japan Health Sciences Foundation (J.N.); by National Institutes of Health grant RO1-CA89 091 and by the Bursary Award from the Aplastic Anemia (AA) & Myelodysplastic Syndrome (MDS) International Foundation (M.B.); and by an unrestricted educational grant from Hémoglobinurie Paroxystique Nocturne (HPN) France Association (G.S.).

A complete list of the members of the International PNH Interest Group appears in "Appendix."

The online version of this article contains a data supplement.

**Reprints:** Charles J. Parker, Hematology/Oncology Section (111H), George E. Whalen VA Medical Center, Salt Lake City, UT 84148; e-mail: charles.parker@hsc.utah.edu.

© 2005 by The American Society of Hematology

**Table 1. Classification of PNH**

A. Classic PNH
B. PNH in the setting of another specified bone marrow disorder (eg, PNH/aplastic anemia or PNH/refractory anemia-MDS)
C. PNH-subclinical (PNH-sc) in the setting of another specified bone marrow disorder (eg, PNH-sc/aplastic anemia)

**Minimal essential diagnostic criteria**

Flow cytometry is recommended to identify the GPI-AP deficient peripheral blood cells that are diagnostic of PNH (see “Diagnosis of PNH”). Assessment of hemolytic parameters and bone marrow analysis are required to determine the subcategory into which each patient falls (“Classification,” Table 1, Table 2).

**Recommended ancillary studies**

Appropriate management requires determination of a number of factors that influence clinical manifestations and prognosis (Table 3).

**Management of PNH****Who should be screened for PNH?**

Essentially all patients with classic PNH report gross hemoglobinuria at some point during the course of their illness, but this symptom may be absent in patients with PNH/aplastic anemia or PNH/refractory anemia-MDS because the clone size is often relatively small. In a series of 80 unclassified patients, only 26% reported hemoglobinuria at presentation (Table 4).<sup>1</sup> As the hemolysis is a complement-mediated, intravascular process, all patients with clinically significant hemolysis have an abnormally high serum LDH. Therefore, in the absence of elevated LDH, screening for clinical forms of PNH (eg, classic PNH or PNH/aplastic anemia) is unwarranted. However, this diagnostic criterion is not applicable for PNH-sc, because, by definition, clinical evidence of hemolysis is absent in these patients. Screening for PNH in patients with aplastic anemia, even in the absence of clinical evidence of hemolysis, is recommended at diagnosis and at least yearly during follow-up (Table 5). Identifying PNH-sc appears clinically relevant, as recent studies<sup>2</sup> suggest that patients with a small population of PNH cells, in combination with either aplastic anemia or refractory anemia-MDS, have a high probability of responding to immunosuppressive therapy (IST). Routine screening of patients with subcategories of MDS other than refractory

**Table 2. Minimal essential criteria required for diagnosis and categorization**

A. Evidence of a population of peripheral blood cells (erythrocytes, granulocytes, or preferably both) deficient in GPI-APs. Flow cytometric analysis of peripheral blood erythrocytes, granulocytes, or both using primary antibodies against GPI-APs or the FLAER* assay reveals a population of hematopoietic cells that is partially or completely deficient in all GPI-APs.
B. Complete blood count, reticulocyte count, serum concentration of lactate dehydrogenase (LDH), bilirubin (fractionated), and haptoglobin
C. Bone marrow aspirate, biopsy, and cytogenetics

\*FLAER (fluorescently labeled aerolysin). Aerolysin is a bacterial protein that binds selectively to GPI-APs. When used for flow cytometric analysis, leukocytes that express GPI-APs bind the fluorescently labeled reagent. PNH leukocytes do not bind FLAER because they do not express GPI-APs. Therefore, PNH leukocytes are identified in the flow cytometric histogram as a population of cells with absent or dim fluorescence. FLAER cannot be used for analysis of erythrocytes because, for unknown reasons, the reagent does not bind well to human red cells under the conditions required for the assay.

**Table 3. Recommended supporting studies**

A. Medical history with emphasis on symptoms of hemoglobinuria, thromboembolic disease, dysphagia, odynophagia, abdominal pain, and male impotence
B. Determination by flow cytometry of the proportion of PNH I, PNH II, and PNH III erythrocytes*
C. Determination by flow cytometry of the proportion of GPI-AP-deficient granulocytes†
D. Serum iron studies (iron concentration, total iron binding capacity, and ferritin concentration)
E. Serum concentration of creatinine and blood urea nitrogen
F. Serum concentration of erythropoietin
G. Urine hemosiderin
H. HLA type‡

\*Hemolysis depends on both the proportion and type of abnormal erythrocytes (see “Management of the anemia of PNH”).

†Determining the contribution of *P/GA* mutant hematopoiesis may influence therapeutic decisions such as prophylactic anticoagulation.

‡The association between HLA type and subclinical PNH may have prognostic and therapeutic implications (see “Subclinical PNH”).

anemia or with other clonal myelopathies (eg, myelofibrosis) who have no clinical or biochemical evidence of hemolysis is not recommended.

A thromboembolic event as the presenting manifestation of PNH is uncommon (~5%; Table 4). Routine screening for PNH of all patients with thrombosis is not recommended, but patients who present with thrombosis at unusual sites (Table 5) should be screened, especially if coexistent cytopenias, intravascular hemolysis, or both are noted.

Gastrointestinal complaints (episodic abdominal pain and dysphagia/odynophagia, see “Dysphagia, male impotence, abdominal pain”) may be the initial manifestation of the disease in approximately 10% of patients (Table 4). Due to chronic intravascular hemolysis, urinary iron loss is high in patients with PNH, and iron deficiency is common.

**Diagnosis of PNH**

**Flow cytometry.** Flow cytometric analysis<sup>3-5</sup> using antibodies directed against GPI-AP is the most sensitive and informative assay available for diagnosis of PNH (Figures 1-3; Table 6). For initial studies, quantitation of at least 2 GPI-APs is recommended to exclude the possibility that the clinical process is a consequence of an inherited, isolated deficiency of a single GPI-AP.<sup>6,7</sup>

For patients with established, stable disease, yearly analysis of peripheral blood GPI-AP expression is recommended, however, a change in clinical parameters (worsening or more frequent hemolysis or a thromboembolic event) warrants immediate re-evaluation (Table 6). Clinical improvement should also prompt an interim

**Table 4. Presenting features in 80 patients with PNH**

Signs and symptoms	No. of patients (%)
Symptoms of anemia	28 (35)
Hemoglobinuria	21 (26)
Hemorrhagic signs and symptoms	14 (18)
Aplastic anemia	10 (13)
Gastrointestinal symptoms	8 (10)
Hemolytic anemia and jaundice	7 (9)
Iron-deficiency anemia	5 (6)
Thrombosis or embolism	5 (6)
Infections	4 (5)
Neurologic signs and symptoms	3 (4)

Modified from Dacie and Lewis.<sup>1</sup>

**Table 5. Who should be screened for PNH?**

<ul style="list-style-type: none"> <li>● Patients with hemoglobinuria</li> <li>● Patients with Coombs-negative intravascular hemolysis (based on abnormally high serum LDH), especially patients with concurrent iron deficiency</li> <li>● Patients with venous thrombosis involving unusual sites*                             <ul style="list-style-type: none"> <li>○ Budd-Chiari syndrome</li> <li>○ Other intra-abdominal sites (eg, mesenteric or portal veins)</li> <li>○ Cerebral veins</li> <li>○ Dermal veins</li> </ul> </li> <li>● Patients with aplastic anemia (screen at diagnosis and once yearly even in the absence of evidence of intravascular hemolysis)†</li> <li>● Patients with refractory anemia-MDS‡</li> <li>● Patients with episodic dysphagia or abdominal pain with evidence of intravascular hemolysis</li> </ul>
---

\*Patients with PNH and thrombosis usually have a relatively large PNH clone. Therefore, most PNH patients with thrombosis will have clinically apparent evidence of intravascular hemolysis. Patients with primarily or exclusively PNH type II cells, however, may represent an exception. In this case, patients could have a large PNH clone with only subtle clinical evidence of spontaneous hemolysis. Arterial thrombosis has been observed in patients with PNH but is uncommon compared with venous thrombosis.

†Patients with aplastic anemia should be screened even in the absence of evidence of intravascular hemolysis to identify those with subclinical PNH (PNH-sc/aplastic anemia). Screening of patients with refractory anemia-MDS is also recommended even in the absence of clinical evidence of hemolysis. Routine screening of patients with other forms of MDS or with myeloproliferative disease that have no evidence of intravascular hemolysis is not recommended outside of a research setting.

analysis as the mutant clone sometimes becomes significantly smaller or undetectable.<sup>8</sup> A reduction in the percentage of GPI-AP-deficient granulocytes might influence the decision about prophylactic anticoagulation, as thrombophilic proclivity appears related to PNH clone size<sup>9-11</sup> (see “Thrombosis”).

Flow cytometric analysis is more than binary (ie, positive or negative). In addition to identifying a population of GPI-AP-deficient cells, the analysis can both determine the percentage of cells that are abnormal and identify discrete populations with different degrees of deficiency (particularly on erythrocytes; Figure 1). Erythrocytes with complete deficiency of GPI-APs are called PNH III, those with subtotal deficiency (usually ~10% of normal expression) are called PNH II, and those with normal expression are called PNH I (Figure 1). Knowing both the percentage and type

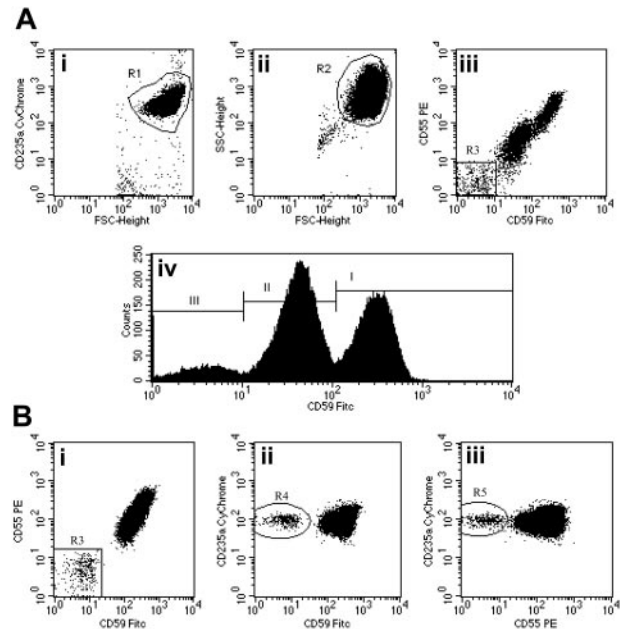
**Table 6. Recommendations for flow cytometric analysis in diagnosis and management of PNH**

<ul style="list-style-type: none"> <li>● For patients with clinical evidence of hemolysis (classic PNH and PNH/aplastic anemia)                             <ul style="list-style-type: none"> <li>○ At diagnosis, flow cytometric analysis of both erythrocytes* and granulocytes† is recommended.</li> <li>○ After establishment of the diagnosis, flow cytometric analysis is recommended every 6 months for 2 years and yearly thereafter if the parameters are stable.</li> <li>○ If there is evidence of clinical progression (or amelioration), more immediate analysis should be performed.</li> </ul> </li> <li>● For patients with aplastic anemia or refractory anemia-MDS‡ without clinical evidence of hemolysis                             <ul style="list-style-type: none"> <li>○ At diagnosis, analysis of erythrocytes and granulocytes using high-sensitivity flow cytometry.</li> <li>○ Every year, even in the absence of clinical evidence of hemolysis (including patients treated with immunosuppressive therapy).</li> </ul> </li> </ul>
--

\*Best performed prior to transfusion or, if clinically feasible, during a period of transfusion abstinence. The results of the analysis for erythrocytes should include the percentage type I, type II, and type III cells.

†Analysis of granulocytes is needed for the following 2 reasons: (1) analysis provides the best estimate of the size of the PNH clone(s); (2) analysis is unaffected by red cell transfusion.

‡Regardless of marrow cellularity.

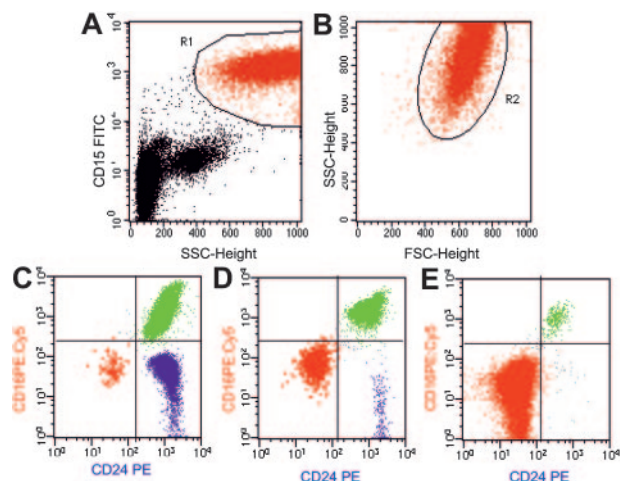


**Figure 1. Flow cytometric analysis of red cells in PNH using a combination of anti-CD59 FITC, anti-CD59 PE, and anti-CD235a CyChrome.** (A-i-ii) Flow cytometry plots show the gating strategy for identifying a pure population of red cells. An initial region (R1) is set on CD235a<sup>+</sup>FSC<sup>High</sup> events. A second region (R2) is then drawn around the logFSC/SSC characteristics of these cells. Only events that meet both these criteria are analyzed. (A-iii) CD59 and CD55 bivariate expression on these erythroid events. A small population of complete deficiency cells (type III) are detected (region R3 = 8.0%). (A-iv) Histogram analysis of CD59 expression also shows a major population of partially deficient cells (type II) comprising 53.9% of the total. Type I (normal expression) cells comprise 38.1% of the total. (B-i-iii) Detection of a very small red cell clone in a patient with PNH-sc/aplastic anemia. The red cell PNH clone comprises 0.4% of the total red cells (B). Confidence that this population is not an artifact is shown by simultaneous CD59 (Bii) and CD55 (Biii) deficiency and strong expression of CD235a. Illustration enhanced by A. Y. Chen.

of deficient red cells is helpful in managing the anemia of PNH (see “Management of the anemia of PNH”). Recent red cell transfusion is unlikely to obscure the diagnosis of PNH, but the flow cytometric histogram will be affected, as transfusion will increase the proportion of cells with normal expression of CD55 and CD59. Therefore, to obtain accurate information about the percentage of GPI-AP-deficient erythrocytes, analysis should be performed prior to transfusion or during a period of transfusion abstinence (at least 1 month, but longer if clinically safe).

Analysis of expression of GPI-AP on granulocytes provides additional clinically relevant information. In contrast to GPI-AP-deficient red cells,<sup>12</sup> the life span of PNH granulocytes is normal.<sup>13</sup> Therefore, the proportion of abnormal granulocytes more accurately reflects the PNH clone size and is unaffected by red cell transfusion (Figure 2).

**Subclinical PNH.** Standard single-color flow cytometry is sufficiently sensitive to detect accurately 3% GPI-AP-deficient cells.<sup>5</sup> By using 2-color analysis and careful gating, sensitivity can be increased by 3 orders of magnitude (Figure 3).<sup>2,14</sup> Patients with small PNH clones (< 10% GPI-AP-deficient granulocytes) have little or no clinical evidence of hemolysis. Most of these patients have aplastic anemia or refractory anemia-MDS.<sup>2,14,15</sup> As discussed in “Who should be screened for PNH?” finding small populations of GPI-AP-deficient cells in the setting of aplastic anemia or refractory anemia-MDS appears to have important prognostic and therapeutic implications.<sup>2,14,15</sup> For this reason, high-sensitivity flow cytometric analysis is recommended for these patients both at



**Figure 2. Flow cytometric analysis of granulocytes in PNH using a combination of anti-CD15 FITC, anti-CD24 PE, and anti-CD16 PE:Cy5.** Flow cytometry plots (A-B) show the gating strategy for identifying a pure population of granulocytes based on light scatter characteristics and a transmembrane lineage marker (CD15). An initial region (R1) is set on CD15<sup>+</sup>SSC<sup>High</sup> events (A). A second region (R2) is then drawn around the FSC/SSC characteristics of these cells to further refine the gating procedure (B). Only events that meet both these criteria are analyzed. (C-E) Using this combination, normal eosinophils (blue) can be clearly separated from PNH cells (red) and normal granulocytes (green). Plots are from 3 representative patients with PNH. (C) A small PNH granulocyte clone of 0.18% of total granulocytes in a patient with aplastic anemia (PNH-sc/aplastic anemia). (D) A larger PNH granulocyte clone of 8.7% in a patient with aplastic anemia (PNH/aplastic anemia). (E) Plot is from a patient with classic PNH and shows a large PNH granulocyte pool (98.8%). In this instance, the majority of hematopoiesis is derived from PNH stem cells. There is some residual normal granulocyte production (the 1% of cells that are CD16<sup>+</sup>CD24<sup>+</sup>) and this population serves as an internal positive control for antibody staining. Illustration enhanced by A. Y. Chen.

diagnosis and yearly during and after treatment, even in the absence of clinical or biochemical evidence of hemolysis (Table 6).

Not all flow cytometry laboratories have the capacity to perform high-sensitivity analysis. To diagnose and follow patients with PNH-sc, physicians are encouraged to identify laboratories that can consistently and reproducibly detect less than 1.0% GPI-AP-deficient erythrocytes and granulocytes.

**Other approaches to diagnosis.** The FLAER (fluorescently labeled aerolysin) assay takes advantage of binding of a bacterial protein, aerolysin, to GPI-AP.<sup>16-19</sup> This assay is useful for analyzing leukocytes for expression of GPI-AP but cannot be used for analysis of erythrocytes (Table 6).

Although they have much biologic and historic importance,<sup>20</sup> the acidified serum lysis test (Ham test) and the sucrose lysis test (sugar water test) have largely been abandoned as diagnostic assays because they are both less sensitive and less quantitative than flow cytometry. Testing for expression of other GPI-AP using functional or immunohistochemical assays (eg, erythrocyte acetylcholine esterase or neutrophil alkaline phosphatase) can be used as part of the screening process or as ancillary studies to support the diagnosis, but they should not be used in place of flow cytometry.

**Bone marrow analysis.** While deficiency of GPI-AP can be demonstrated on CD34<sup>+</sup> bone marrow cells using 2-color flow cytometry,<sup>21</sup> this type of analysis is unnecessary for standard diagnosis of PNH.

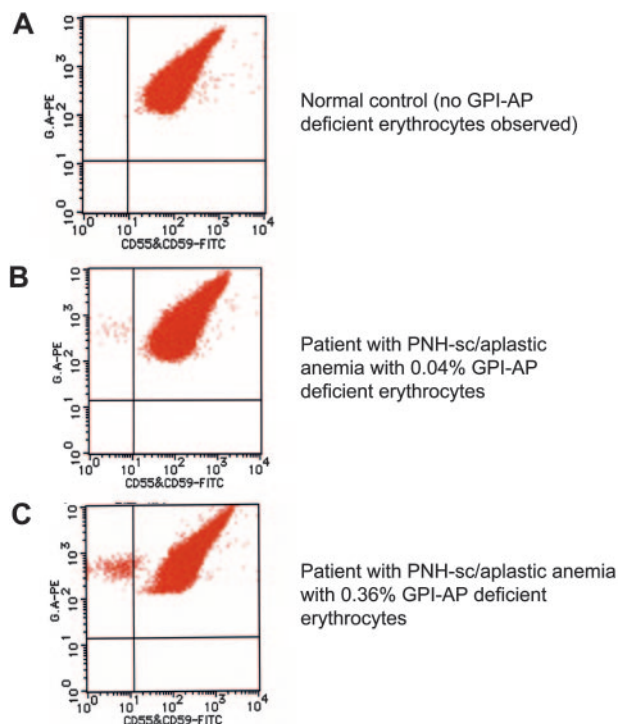
Morphologic analysis of the bone marrow aspirate and biopsy and cytogenetics are needed for proper classification, as PNH is often observed in association with marrow failure syndromes<sup>22-24</sup> and sometimes with clonal myelopathies<sup>2,15,25-27</sup> (Tables 1 and 2). Although nonrandom karyotypic abnormalities associated with PNH have not been identified,<sup>28,29</sup> cytogenetic analysis is recommended for the following 2 reasons: (1) by analyzing a large

number of samples using modern technology, disease-specific abnormalities may be identified; and (2) nonrandom karyotypic abnormalities associated with other underlying disease processes may help in categorizing individual patients (Table 2).

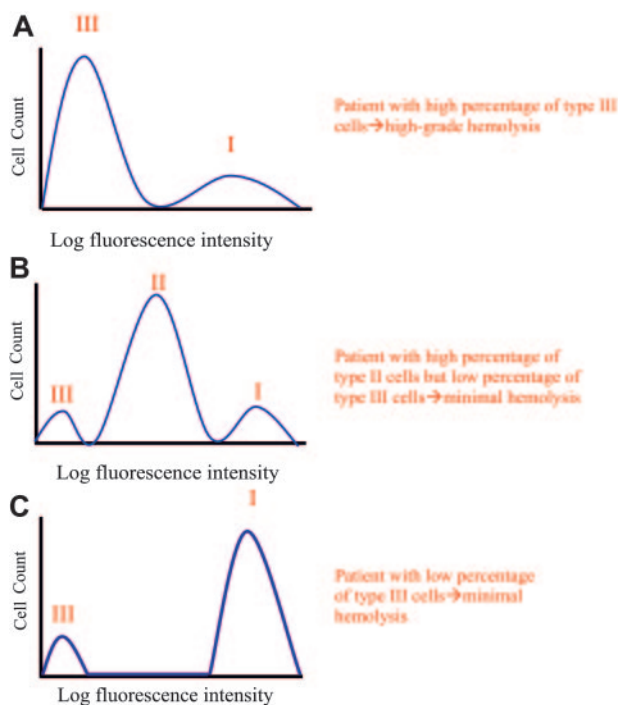
**PIGA mutations.** Deficiency of GPI-AP in patients with PNH is due to an acquired somatic mutation in *PIGA*.<sup>30</sup> Therefore, documentation of the *PIGA* mutation(s) would confirm the diagnosis of PNH.<sup>31</sup> Because of technical challenges, identification of *PIGA* mutations has been limited to the research setting; however, new technology may eventually make routine clinical determination of *PIGA* mutations feasible.<sup>32-34</sup>

### Management of the anemia of PNH

**The anemia of PNH is complex.** Coombs-negative hemolytic anemia is the clinical hallmark of PNH, but because the disease usually arises in the setting of an underlying abnormality of the bone marrow, hemolysis may account for only part of a patient's anemia. Further, the erythrocytes of PNH are a mosaic of normal and abnormal cells, and the portion of GPI-AP-deficient red blood cells (RBCs) varies among patients (Figures 1-4).<sup>35,36</sup> For example, in hypothetical patient 1, only 15% of the circulating RBCs may be GPI-AP deficient, whereas in hypothetical patient 2, 75% GPI-AP-deficient erythrocytes may be observed.<sup>35</sup> In the former, hemolysis would contribute modestly to an observed anemia, whereas in the latter, a significant hemolytic component would be expected (Figure 4).<sup>35</sup> Another complicating factor is that deficiency of GPI-AP may be partial rather than complete (Figures 1 and 4), and partial expression of CD55 and CD59 is sufficient to protect PNH II cells from spontaneous complement-mediated lysis in vivo.<sup>35,37</sup>



**Figure 3. High-sensitivity flow cytometric analysis of erythrocytes.** By careful gating and by using dual-color flow cytometry, GPI-deficient cells that comprise less than 1% of the total erythrocyte population can be reliably and reproducibly demonstrated (B-C).<sup>2</sup> Using this technique, GPI-AP-deficient cells are not identified in the peripheral blood of the controls (volunteer donors; A). A combination of FITC-labeled anti-CD55 and anti-CD59 was used along with phycoerythrin (PE)-labeled anti-glycophorin A for the dual staining. These data were kindly provided by Dr Shinji Nakao and Dr Chiharu Sugimori, Kanazawa University, Japan, and are used with their permission. Illustration enhanced by A. Y. Chen.



**Figure 4. Phenotypic mosaicism in PNH.** Hypothetical histograms of erythrocytes from patients with PNH stained with anti-CD59 are illustrated. The proportion and type of abnormal erythrocytes varies greatly among patients with PNH and these characteristics are important determinants of clinical manifestations. In general, patients with a high percentage of type III erythrocytes have clinically apparent hemolysis (A). If the erythrocytes are partially deficient in GPI-AP, hemolysis may be modest even if the percentage of the affected cells is high (B). A patient may have a diagnosis of PNH, but if the proportion of type III cells is low, only biochemical evidence of hemolysis may be observed (C). Illustration enhanced by A. Y. Chen.

Therefore, even if a patient has a high proportion of PNH II cells, only modest evidence of spontaneous hemolysis is usually observed (Figures 1 and 4). But brisk hemolysis may occur in patients with predominantly PNH II erythrocytes in a situation where complement activation is enhanced (eg, by infection, trauma, surgery, pregnancy, unusual stress).

**What is the contribution of hemolysis to the anemia?** Prior to initiating therapy, an effort should be made to determine how much of the anemia is a consequence of hemolysis and how much is due to impaired erythropoiesis (Table 7). Review of the complete blood count is informative because evidence of thrombocytopenia, leukopenia, or both suggests stem cell dysfunction. The capacity of the marrow to respond to the anemia can be inferred from the reticulocyte count. An element of marrow failure is likely a contributing factor in a patient with PNH who has anemia with an inappropriately low reticulocyte count.

Biochemical parameters of hemolysis should be assessed (Table 7). Normal or minimal elevation of LDH argues against hemolysis as a major contributing factor to the anemia. The presence of urine hemosiderin suggests chronic intravascular hemolysis but provides no quantitative information, while gross hemoglobinuria indicates clinically significant intravascular hemolysis.

The concentration of erythropoietin should be determined as renal dysfunction may complicate PNH.<sup>38</sup> Iron deficiency due to hemosiderinuria/hemoglobinuria is common.<sup>39,40</sup>

**Is treatment of hemolysis necessary?** If the assessment in “What is the contribution of hemolysis to the anemia?” suggests that hemolysis contributes significantly to the anemia, treatment is indicated for the following reasons: (1) patients with chronic hemolysis complain of lethargy, malaise, myalgia and loss of sense of well being that diminishes significantly quality of life; (2) there

is evidence that chronic hemolysis has an untoward effect on renal function<sup>38</sup>; (3) the dysphagia and male impotence of PNH appear related to hemolysis<sup>41</sup>; (4) a correlation between thrombosis and hemolysis may exist.

**Treatment of the hemolysis of PNH.** If a modality with a favorable therapeutic index were available, there would be little debate about whether treatment of hemolysis is appropriate. Although such an agent appears to be forthcoming in the form of eculizumab,<sup>42</sup> current options are limited, and the outcome of treatment is often unsatisfactory because of inconsistent response rates and unfavorable toxicity profiles.

**Corticosteroids.** Corticosteroids as treatment, for both chronic hemolysis and acute hemolytic exacerbations,<sup>39,43-45</sup> is a subject of debate, and some members of the International PNH Interest Group do not advocate the use of steroids in PNH in any circumstances. Part of the debate is fueled by the empiric nature of the therapy, as there are no experimental data that provide a plausible explanation for why steroids should ameliorate the hemolysis of PNH. Nonetheless, some patients appear to respond rapidly and dramatically to glucocorticoids (given in the dosage range of 0.25-1.0 mg/kg per day of prednisone). The rapid response (often within 24 hours of initiating therapy) suggests that complement inhibition accounts for antihemolytic activity of glucocorticoid therapy. Such an effect could be direct (the result of inhibition of the activity of some component of the alternative pathway of complement) or indirect (the result of dampening a process, such as inflammation, that stimulates activation of complement).

The main value of corticosteroids may be in attenuating acute hemolytic exacerbations. Under these circumstances, brief pulses of prednisone may reduce the severity and duration of the crisis while avoiding the untoward consequences associated with long-term use. The value of steroids in treating chronic hemolysis is limited by toxicity, and the harm that can accrue from long-term use cannot be overemphasized. An every-other-day schedule may attenuate some of the adverse effects of chronic steroid use,<sup>39</sup> but patients may note worsening of symptoms on the off day. Careful follow-up is essential and both bacterial prophylaxis and prophylaxis against steroid-induced osteopenia are recommended. Awareness of the potentially debilitating effects of steroid myopathy and sensitivity to the disfiguring consequences of iatrogenic Cushing syndrome are essential for proper management.

**Androgens.** Androgen therapy, either alone or in combination with steroids, has been used successfully to treat the anemia of PNH.<sup>39,40</sup> As with glucocorticoids, the mechanism by which androgenic steroids ameliorate the anemia of PNH is not fully understood, although the rapid onset of action is consistent with complement inhibition.<sup>40</sup>

**Table 7. Information useful for managing anemia in patients with PNH**

A. Complete blood count
B. Reticulocyte count
C. Serum concentration of lactate dehydrogenase (LDH), bilirubin (total and direct fractions), and haptoglobin
D. Flow cytometric analysis of erythrocytes and granulocytes for expression of GPI-AP
E. Serum iron studies (iron concentration, total iron binding capacity, transferrin saturation index, and ferritin concentration)
F. Serum concentration of blood urea nitrogen and creatinine
G. Serum erythropoietin concentration
H. Urine hemosiderin*

\*Indicative of chronic hemolysis but provides no quantitative information.

Potential complications of androgen therapy include liver toxicity (cholestatic jaundice, peliosis hepatis), prostatic hypertrophy, and virilizing effects. The toxicity profile is more favorable for attenuated synthetic androgens such as Danazol, making long-term use of this drug a reasonable management option. A starting dose of 400 mg twice a day is recommended, but a lower dose (200-400 mg/d) may be adequate to control chronic hemolysis. Monitoring of liver function studies during therapy is mandatory. Whether androgen therapy increases the risk of developing Budd-Chiari syndrome in patients with PNH is unknown.

**Iron replacement.** Patients with PNH frequently become iron deficient as a result of both hemoglobinuria and hemosiderinuria.<sup>39,40</sup> Clinically important iron loss from hemosiderinuria can occur even in the absence of gross hemoglobinuria. Replacement is often associated with exacerbation of hemolysis, regardless of the route of administration.<sup>39,40</sup> Compared with parenteral replacement, oral administration of iron may be accompanied by less severe hemolytic exacerbations, but urinary iron loss may be so great that repletion cannot be achieved through this mechanism.<sup>39</sup> Parenteral repletion is generally safe. Concern for inducing a hemolytic exacerbation should not deter iron repletion, as iron deficiency not only limits erythropoiesis but also exacerbates the hemolysis of PNH.<sup>40</sup> If a hemolytic exacerbation occurs in the setting of iron repletion, the episode can be controlled by treatment with corticosteroids or androgens or by suppression of erythropoiesis by transfusion.

**Transfusion.** In addition to increasing the hemoglobin concentration, transfusion may ameliorate hemolysis by suppressing erythropoiesis. Concerns about inducing a hemolytic exacerbation as a consequence of infusion of small amounts of donor plasma that may contaminate red cell preparations appear unwarranted.<sup>46</sup> However, hemofiltration is recommended to prevent transfusion reaction arising from the interaction between donor leukocytes and recipient antibodies. Iatrogenic hemochromatosis from chronic transfusion may be delayed in patients with PNH due to iron loss from hemoglobinuria/hemosiderinuria.<sup>39</sup> In fact, iron overload in patients with classic PNH is rare. But iron overload remains a concern in patients who require chronic transfusion when the anemia is primarily a consequence of marrow failure rather than hemolysis.

**Splenectomy.** The role of splenectomy in the management of patients with PNH is unclear. Reports of amelioration of hemolysis and improvement in cytopenias following splenectomy are anecdotal. Concerns about lack of proven efficacy and the potential for postoperative complications, particularly thrombosis, have led some members of the International PNH Interest Group to argue that splenectomy has no role in the management of PNH.

**Folate.** Supplemental folate (5 mg/d) is recommended to compensate for increased utilization associated with heightened erythropoiesis that is a consequence of hemolysis.

**Complement inhibitors.** As the hemolysis of PNH is a consequence of complement-mediated cytolysis, inhibition of complement is a logical approach to therapy.<sup>47</sup> Recently, the results of a phase 2 study using a humanized monoclonal antibody against complement C5 (eculizumab) to treat patients with PNH were reported.<sup>42</sup> This reagent was effective in controlling the symptoms and signs of the hemolysis, and a marked improvement in quality-of-life parameters was documented in most patients. Significant adverse events were not observed. A phase 3 transfusion avoidance trial in which the efficacy of eculizumab is compared with placebo began enrolling patients in the late fall of 2004.

**Management of nonhemolytic anemia.** Treatment of anemia that is primarily due to bone marrow failure should be aimed at the underlying disease (eg, aplastic anemia, MDS). If absolute or relative erythropoietin deficiency is felt to contribute to the anemia, replacement with the recombinant protein is warranted, but patients should be closely monitored as erythropoietin supplementation could exacerbate hemolysis by increasing production of GPI-AP-deficient erythrocytes.

Androgens may also be beneficial in patients with PNH who have a hypoproliferative component to their anemia.<sup>39</sup>

### Stem cell transplantation

The issues that confound recommendations for transplantation for PNH center both on the heterogeneous presentation and natural history and on its close association with marrow failure syndromes. To date, the 220 patients with PNH from the registry of the French Society of Hematology represents the largest natural history study group.<sup>48</sup> Although the French cohort had a median survival of 12 years, the study identified risk factors associated with a worse outcome. While some of the risk factors are of little help for transplant decision-making (eg, age older than 55 years; relative risk of death [RR] = 4.0), others may provide guidance. There were 4 factors associated with worse survival: (1) occurrence of thrombosis (regardless of location; RR = 10.2); (2) progression to pancytopenia (RR = 5.5); (3) transformation to MDS or acute leukemia (RR = 19.1); and (4) thrombocytopenia at diagnosis (RR = 2.2).

Data from 67 patients from single centers experience and from 2 registries studies were reviewed.<sup>49-72</sup> The details of the literature review can be found in Document S1 (see the Supplemental Document link at the top of the online article, at the *Blood* website). The conclusions that were derived from the reviewed literature on transplantation for PNH are shown in Table 8. We are also left with several unresolved questions related to PNH and transplantation. Given the unpredictable course of the disease, including the possibility of spontaneous remission, what is the optimal time for stem cell transplantation (SCT)? Should a conventional or a nonmyeloablative conditioning regimen be proposed given that the latter may be associated with less early transplant-related mortality (although graft-versus-host disease [GVHD] is still a problem)? What is the place of transplantation using stem cells from an unrelated donor in the era of HLA molecular matching that appears to produce outcomes similar to those observed for transplantation using stem cells from HLA-identical sibling donors? How will new treatment options (eg, eculizumab) influence recommendations for SCT?

By establishing a worldwide PNH registry (see "PNH registry and future directions") that will allow comparison of the outcome of patients who have not undergone transplantation to those who undergo SCT, these questions can begin to be answered.

### Thrombosis

**Overview of thromboembolic disease in PNH.** Thrombophilia is the leading cause of mortality in PNH.<sup>8,48</sup> But, in contrast to our thorough understanding of the basis of the hemolysis, much less is known about the mechanism that underlies the thrombophilia of PNH (Table 9).<sup>73</sup>

Recent clinical studies support the hypothesis that the probability of a thromboembolic event is directly related to the size of the PNH clone.<sup>9-11</sup> In the study by Hall and colleagues,<sup>10</sup> the 10-year risk of thrombosis in patients with more than 50%

**Table 8. Bone marrow/stem cell transplantation for patients with PNH**

Indications for consideration of transplantation
<ul style="list-style-type: none"> <li>● Bone marrow failure                             <ul style="list-style-type: none"> <li>○ Decision on transplantation is based on underlying marrow abnormality (eg, aplastic anemia)*</li> </ul> </li> <li>● Major complication of PNH†                             <ul style="list-style-type: none"> <li>○ Recurrent, life-threatening thromboembolic disease</li> <li>○ Refractory, transfusion-dependent hemolytic anemia‡</li> </ul> </li> </ul>
PNH-specific transplant-related issues
<ul style="list-style-type: none"> <li>● The conditioning regimen of cyclophosphamide/ATG is recommended for patients with PNH/aplastic anemia. For patients with classic PNH, a more myeloablative regimen is indicated.§</li> <li>● Additional investigation is required to define the role of nonmyeloablative regimens.</li> <li>● For syngeneic twin transplants, a myeloablative conditioning regimen is recommended to prevent recurrence of PNH.</li> <li>● There are no PNH-specific adverse events associated with transplantation; severe, acute graft-versus-host disease (GVHD) occurs in more than a third of the patients and the incidence of chronic GVHD is roughly 35%.</li> <li>● Overall survival for unselected PNH patients who undergo transplantation using an HLA-matched sibling donor is in the range of 50% to 60%.</li> </ul>

\*If the dominant clinical abnormalities are a consequence of bone marrow failure (eg, hypoproliferative anemia, neutropenia with recurrent infections, thrombocytopenia with major bleeding complications) the decision to recommend transplantation should be based on guidelines for management of the specific marrow failure syndrome.

†Factors including age, comorbid conditions, availability of an HLA-matched sibling donor, and time from initial diagnosis should be considered before recommending transplantation for major complications of PNH.

‡The availability of new treatment options (eg, eculizumab) may influence the decision to recommend transplantation.

§Radiation- or busulfan-based.

GPI-AP-deficient granulocytes was 44% compared with 5.8% for patients with less than 50%. Using a logistic regression model, Moyo et al<sup>9</sup> calculated that the odds ratio for thrombosis was 1.64 for each 10% increase in the percentage of GPI-AP-deficient granulocytes. According to that study, a patient with more than 70% GPI-AP-deficient granulocytes had an 11.8-fold greater risk of thrombosis than a patient with a PNH clone of 20%.

**Prophylaxis.** Prophylaxis against thromboembolic events in patients with PNH is an issue of debate among members of the International PNH Interest Group. Current estimates of the risk are based on retrospective analysis.<sup>9-11,73</sup> The relatively high risk of a thromboembolic complication led Hall and colleagues to advocate prophylaxis with warfarin for patients with PNH with more than 50% GPI-AP-deficient granulocytes who have no contraindications to anticoagulation.<sup>10</sup> Those investigators reported no thromboembolic events in 39 patients who received warfarin prophylaxis compared with a 36.5% 10-year risk of thrombosis for 56 patients who did not. In that study, there were 2 serious hemorrhages in approximately 100 patient years of warfarin therapy.

Even when differences in clone size are taken into account,<sup>11</sup> the prevalence of thromboembolism (~2%) among patients from Japan, China, and Mexico<sup>11,74-76</sup> appears lower than in patients from the United States and Europe, making anticoagulant prophylaxis for patients with PNH from these ethnic/geographic backgrounds difficult to justify.

Due to the lack of randomized, prospective studies, evidence-based guidelines for antithrombotic prophylaxis cannot be formulated satisfactorily. Available data (and its limitations) should be discussed with patients, and factors such as age, activity level, compliance, and comorbid conditions (in addition to the size of the PNH clone) should enter into decisionmaking about anticoagulant prophylaxis. The role of reagents that inhibit platelet function in

prophylaxis against the thrombophilia of PNH is undefined. Newer pharmacologic agents (eg, oral thrombin inhibitors) with a more favorable therapeutic index than warfarin may liberalize recommendations for prophylactic anticoagulation in patients with PNH.

**Management of thromboembolic disease.** Although arterial thrombosis may be observed, thromboembolic events in patients with PNH usually involve the venous system. Acute thrombotic events require anticoagulation with heparin. Thrombolytic therapy<sup>77,78</sup> or radiologic intervention<sup>79</sup> should be strongly considered in patients with acute onset of Budd-Chiari syndrome. Thrombocytopenia often complicates PNH, and this issue must be addressed when formulating an anticoagulation management plan. Thrombocytopenia is a relative but not an absolute contraindication to anticoagulation, and transfusions should be given to maintain the platelet count in a safe range rather than withholding therapy.<sup>80</sup>

Patients with PNH who experience a thromboembolic event should be anticoagulated indefinitely (Table 9). There are no satisfactory guidelines for management of patients who fail standard-intensity warfarin therapy. High-intensity warfarin therapy (International Normalized Ratio [INR], 3.0-4.0) or subcutaneous low-molecular-weight heparin are options in this setting. In the absence of proven efficacy, the risk of hemorrhage makes the addition of antiplatelet agents to therapeutic anticoagulation difficult to support. Recurrent, life-threatening thrombosis merits consideration for bone marrow transplantation (see “Stem cell transplantation”). The role of complement inhibitors such as eculizumab in the management of the thrombophilia of PNH is currently undefined.

**Pregnancy**

Women with PNH can have serious morbidity and increased mortality during pregnancy.<sup>81</sup> A retrospective review showed that, in 25% of the cases, the diagnosis of PNH was first made during pregnancy.<sup>80</sup> In that study, a high mortality rate was reported (5 deaths in 24 women), with an all-cause mortality of 20.8% (confidence interval [CI] 7.3-39.0). Three deaths were attributed to venous thromboembolism and 2 to infections.

In women with PNH, anemia from hemolysis, underlying bone marrow failure, or both frequently worsens during pregnancy.<sup>80</sup>

**Table 9. Thrombosis and PNH**

<ul style="list-style-type: none"> <li>● The pathogenesis of the thrombophilia of PNH is speculative.</li> <li>● Sites of thrombosis that are disproportionately represented in PNH                             <ul style="list-style-type: none"> <li>○ Hepatic vein (Budd-Chiari syndrome)</li> <li>○ Mesenteric veins</li> <li>○ Portal vein</li> <li>○ Cerebral veins</li> <li>○ Dermal veins</li> </ul> </li> <li>● Propensity toward thrombosis appears roughly proportional to the size of the PNH clone.*</li> <li>● The risk of thromboembolic disease appears higher in white and African-American patients than in patients of Asian/Pacific Island or Hispanic ancestry even when adjusted for clone size.</li> <li>● White and African-American patients with greater than 50% GPI-AP-deficient granulocytes who have no contraindications are candidates for prophylactic anticoagulation with warfarin.†</li> <li>● Patients with PNH who have experienced a thromboembolic event should remain anticoagulated indefinitely.‡</li> </ul>
---

\*The size of the PNH clone is determined by flow cytometric analysis of expression of GPI-APs on peripheral blood granulocytes.

†Standard-intensity warfarin therapy (INR 2.0-3.0) is recommended for chronic therapy.

‡Long-term anticoagulation should be reassessed in any patient who undergoes a spontaneous remission or in whom the PNH clone size falls to below 50%.

Because of concerns about fetal/maternal risks from exposure to potentially toxic therapy, transfusion is the mainstay of management (Table 10). There is no experience with complement inhibitors such as eculizumab<sup>42</sup> in this setting. Moderate to severe thrombocytopenia may complicate the pregnancy, and clinically significant bleeding in this setting necessitates platelet transfusion.

The incidence of clinically apparent venous thromboembolism during pregnancy in women with PNH is about 10%,<sup>80</sup> and these events are associated with a high risk of mortality.<sup>81</sup> Similar to nonpregnant patients with PNH, cerebral and hepatic veins are commonly involved sites of thrombosis. Patients who develop thrombosis should be therapeutically anticoagulated, and thrombolytic therapy should be considered for those with Budd-Chiari syndrome. Concurrent thrombocytopenia may necessitate platelet transfusion in patients who require anticoagulation.

The role of prophylactic anticoagulation for pregnant women with PNH has not been studied systematically; however, because of the significant morbidity and mortality associated with thromboembolism in this setting, prophylaxis is recommended. Coumadin is contraindicated because of teratogenic potential in the first trimester and hemorrhagic risks later in gestation. Anticoagulation with heparin should begin immediately once the combination of pregnancy and PNH is documented. Low-molecular-weight heparin has a hypothetical advantage over unfractionated heparin because of a lower incidence of drug-induced thrombocytopenia. Careful monitoring of the platelet count is required because thrombocytopenia may worsen during the period of anticoagulation (Table 10). Anticoagulation can be discontinued briefly around the time of delivery. However, it should be restarted as soon as is feasible and continued for at least 6 weeks postpartum, as thrombosis during the puerperium is a major concern.<sup>81</sup>

Most deliveries can be accomplished vaginally, although premature delivery may be necessary. Ray et al<sup>80</sup> identified 3 infant deaths (2 still births and 1 neonatal) among 34 births for a perinatal mortality rate of 8.8% (CI 1.9-23.7). All surviving infants had normal growth and development after delivery.

In summary, there are both maternal and fetal risks when PNH complicates pregnancy. Untoward events can be expected in at least half of the mothers and in some of the infants. Counseling female patients with PNH about pregnancy should take into account age, overall health, extent of hemolysis, degree of bone marrow failure (especially thrombocytopenia), previous thrombosis, and comorbid conditions. Despite the many concerns, successful outcomes appear to be the rule rather than the exception.<sup>11,80</sup> But management is complicated and should involve the combined efforts of an experienced hematologist and an obstetrician specializing in high-risk pregnancy.<sup>81</sup>

**Table 10. PNH and pregnancy**

<ul style="list-style-type: none"> <li>● <b>Complications of PNH</b> <ul style="list-style-type: none"> <li>○ Anemia (hemolytic, hypoproliferative, or both)</li> <li>○ Thrombocytopenia</li> <li>○ Venous thromboembolic events</li> </ul> </li> <li>● <b>Management recommendations</b> <ul style="list-style-type: none"> <li>○ Prior to pregnancy, counsel patient on potential risks and possible need for intervention</li> <li>○ Management team should include an experienced hematologist and an obstetrician who specializes in high-risk pregnancies</li> <li>○ Prophylactic anticoagulation with heparin* should begin immediately and continue for 6 weeks after giving birth†</li> <li>○ Blood products as required for treatment of anemia and thrombocytopenia</li> </ul> </li> </ul>
---

\*Low-molecular-weight heparin may be advantageous because it is associated with a lower incidence of heparin-induced thrombocytopenia compared with unfractionated heparin. Regardless of the form of heparin used, frequent (at least every other week) monitoring of the platelet count is needed.

†Warfarin can be used for anticoagulation in the postpartum period.

**Table 11. Future directions for clinical and laboratory studies in PNH**

<ul style="list-style-type: none"> <li>● <b>Clinical studies</b> <ul style="list-style-type: none"> <li>○ Guidelines for management of the thrombophilia of PNH based on prospective randomized studies <ul style="list-style-type: none"> <li>▪ Treatment <ul style="list-style-type: none"> <li>● Does treatment of hemolysis with complement inhibitors modify the thrombophilia of PNH?</li> </ul> </li> <li>▪ Prophylaxis</li> </ul> </li> <li>○ Guidelines for bone marrow and stem cell transplantation in the era of therapeutic complement inhibitors such as eculizumab</li> <li>○ Pregnancy and PNH <ul style="list-style-type: none"> <li>▪ Maternal and fetal risks</li> <li>▪ Management</li> </ul> </li> <li>○ Ethnic and geographic differences <ul style="list-style-type: none"> <li>▪ Are different management guidelines necessary?</li> </ul> </li> <li>○ Natural history of subclinical PNH (PNH-sc)</li> </ul> </li> <li>● <b>Basic studies</b> <ul style="list-style-type: none"> <li>○ What is the mechanism of the thrombophilia of PNH? <ul style="list-style-type: none"> <li>▪ What is the basis of the disproportionate involvement of hepatic, mesenteric, cerebral, and dermal veins?</li> </ul> </li> <li>○ What is the basis of clonal selection? <ul style="list-style-type: none"> <li>▪ What is the relationship between PNH and aplastic anemia and PNH refractory anemia-MDS?</li> <li>▪ How is PNH-sc different from PNH/aplastic anemia and classic PNH?</li> </ul> </li> <li>○ What is the basis of clonal dominance?</li> </ul> </li> </ul>
--

### Pediatric PNH

PNH can occur in the young (about 10% of patients are younger than 21)<sup>81,48</sup> but is often misdiagnosed and mismanaged.<sup>82,83</sup> A retrospective analysis of 26 cases<sup>82</sup> underscored the many similarities between childhood and adult PNH. Signs and symptoms of hemolysis, bone marrow failure, and thrombosis dominate the clinical picture, although hemoglobinuria may be less common in young patients. A generally good response to immunosuppressive therapy (6 of 9 patients) was observed. **However, based on the lack of spontaneous remissions and poor long-term survival (80% at 5 years, 60% at 10 years, and only 28% at 20 years), sibling-matched stem cell transplantation is the recommended treatment of childhood PNH. A recent Dutch study confirmed the common presentation of bone marrow failure in 11 children with PNH,<sup>83</sup> and reported that 5 patients eventually underwent bone marrow transplantation (BMT; 3 matched unrelated donors and 2 matched family donors), of whom 4 are alive. Mortality appears high in young patients with PNH treated with transplantation using unrelated donors although surviving cases have been reported.<sup>72,83</sup>**

### Dysphagia, male impotence, abdominal pain

Many patients with PNH are troubled by dysphagia and odynophagia, especially during hemolytic exacerbations.<sup>41,84</sup> These symptoms appear to be a consequence of esophageal spasm. The cause of the spasm is speculative, but may be due to acquired deficiency of nitric oxide (NO), a bioactive gas that mediates smooth muscle relaxation.<sup>85</sup> Males with PNH may experience episodes of impotence, particularly during hemolytic exacerbations.<sup>41</sup> The cause of the impotence may also be a consequence of decreased bioavailability of NO. Sildenafil citrate has shown efficacy in the treatment of hypercontractile motility disorders of the esophagus, including idiopathic achalasia, where the mechanism of disease appears to be impaired NO production similar to that reported for erectile dysfunction.<sup>86-88</sup> Therefore, sildenafil citrate and pharmacologically related compounds are candidate therapies for both the dysphagia/odynophagia and male impotence of PNH. Agents such



as oral or dermal nitroglycerine that supply NO pharmacologically have also shown efficacy.

Some patients with PNH are debilitated by recurrent episodes of colicky abdominal pain. The etiology of the abdominal pain is largely speculative, but thrombosis of mesenteric vessels appears to play a role in some cases.<sup>39</sup> Vascular spasm may also contribute to this process. Vigorous hydration and pain control are the mainstays of management, but mesenteric vein thrombosis can result in intestinal infarction necessitating surgical intervention. Still to be determined are the roles of anticoagulation, complement inhibition, and NO supplementation in the management of abdominal pain of PNH.

### Geographic and ethnic differences

The natural history of PNH appears different for Americans and Europeans compared with Asian/Pacific Islanders and Hispanics.<sup>8,11,48,74-76,82,89,90</sup> In general, the manifestations of bone marrow failure are more common in Asians/Pacific Islanders and Hispanics. In contrast, thrombosis and infection appear more common in American and European patients. The basis of these phenotypic differences is unknown, but the relationship of ethnicity and geography to the natural history of PNH should be considered when formulating a management plan.

### PNH registry and future directions

The International PNH Interest Group supported the development of a worldwide patient registry in order to generate more detailed epidemiologic data and to gain greater insight into both the natural history of the disease and the outcomes of therapy. The registry also has the potential to provide the framework upon which controlled, randomized clinical studies can be organized. Enrollment began in the fall of 2004. Physicians who follow patients with PNH are encouraged to enter patients into the registry. Information about registry participation can be found on the World Wide Web (<http://www.pnhregistry.com>).

The International PNH Interest Group encourages clinical and basic research. Some potential topics for investigation are shown in Table 11.

## Acknowledgments

The expert advice and support of members of the International PNH Interest Group are gratefully acknowledged. We also thank Dr David E. Jenkins Jr, Hummelstown, PA, for informative discussions.

## Appendix

The International PNH Interest Group is composed of approximately 60 physicians and investigators who have a special interest in the disease. This paper represents the efforts of the group to develop guidelines for the diagnosis and management of PNH. The members of the International PNH Interest Group are as follows:

## References

- Dacie JV, Lewis SM. Paroxysmal nocturnal haemoglobinuria: clinical manifestations, haematology, and nature of the disease. *Ser Haematol*. 1972;5:3-23.
- Wang H, Chuhjo T, Yasue S, Omine M, Nakao S. Clinical significance of a minor population of paroxysmal nocturnal hemoglobinuria-type cells in bone marrow failure syndrome. *Blood*. 2002;100:3897-3902.
- Schubert J, Alvarado M, Uciechowski P, et al. Diagnosis of paroxysmal nocturnal haemoglobinuria using immunophenotyping of peripheral blood cells. *Br J Haematol*. 1991;79:487-492.
- Richards SJ, Rawstron AC, Hillmen P. Application of flow cytometry to the diagnosis of paroxysmal nocturnal hemoglobinuria. *Cytometry*. 2000;42:223-233.
- Hall SE, Rosse WF. The use of monoclonal anti-
- bodies and flow cytometry in the diagnosis of paroxysmal nocturnal hemoglobinuria. *Blood*. 1996;87:5332-5340.
- Yamashina M, Ueda E, Kinoshita T, et al. Inherited complete deficiency of 20-kilodalton homologous restriction factor (CD59) as a cause of paroxysmal nocturnal hemoglobinuria. *N Engl J Med*. 1990;323:1184-1189.
- Daniels G. Cromer-related antigens—blood group

Fiorella Alifinito, Division of Hematology, Federico II University, Naples, Italy; Leslie Andritsos, Washington University School of Medicine, St Louis; David J. Araten, Memorial Sloan Kettering Cancer Center; Han Bing, Peking Union Medical College; Morey Blinder, Departments of Internal Medicine and Pathology, Washington University School of Medicine, St Louis; Michael Bombara, Alexion Pharmaceuticals Inc; Christopher Bredeson, International Bone Marrow Transplant Registry; Robert A. Brodsky, The Sidney Kimmel Comprehensive Cancer Center at Johns Hopkins, Division of Hematologic Malignancies; Tatsuya Chuhjo, Protected Environment Unit, Kanazawa University Hospital; Matthew Cullen, Haematological Malignancy Diagnostic Service, Leeds General Infirmary; Carlos M. de Castro, Duke University Medical Center; Lisa DeBoer, Alexion Pharmaceuticals Inc; Steven M. Devine, Washington University School of Medicine, St Louis; Modupe Elebute, Hematology and Transfusion Medicine, St George's Health Care NHS Trust; Xingmin Feng, Cellular Transplantation Biology, Kanazawa University Graduate School of Medical Science; Paul Finnegan, Alexion Pharmaceuticals Inc; Norbert Gattermann, Heinrich-Heine University Department of Hematology/Oncology and Clinical Immunology; Ulrich Germing, Heinrich-Heine University Department of Hematology/Oncology and Clinical Immunology; Susan Harris, Alexion Pharmaceuticals Inc; Robert Hayashi, Department of Pediatrics, Division of Hematology-Oncology, Washington University School of Medicine, St Louis; Anita Hill, Academic Unit of Haematology, Leeds General Infirmary; Thad Howard, St Jude Children's Research Hospital; Eric Hsi, Section of Hematopathology, Director of Flow Cytometry, Cleveland Clinic Foundation; Norimitsu Inoue, Osaka Medical Center for Cancer and Cardiovascular Diseases; Yuzuru Kanakura, Osaka University Graduate School of Medicine; Akihisa Kanamaru, Kinki University School of Medicine; Tatsuya Kawaguchi, Departments of Hematology & Infectious Diseases, Kumamoto University School of Medicine; Peter Keller, Division of Hematology, Inselspital Bern, University of Berne; Masahiro Kizaki, Division of Hematology, Keio University School of Medicine; Seiji Kojima, Department of Pediatrics, Nagoya University Graduate School of Medicine; Elisabeth Korthof, Leiden University Medical Center; Loree Laratt, University of Alberta Hospitals; Jaroslaw P. Maciejewski, Taussig Cancer Center, The Cleveland Clinic Foundation; Philip J. Mason, Department of Internal Medicine and Department of Genetics, Washington University School of Medicine, St Louis; Gabrielle Meyers, University of Utah School of Medicine; Christopher Mojcik, Alexion Pharmaceuticals Inc; Shoichi Nagakura, Kumamoto National Hospital; Hideki Nakakuma, Wakayama Medical University; Shinji Nakao, Cellular Transplantation Biology, Kanazawa University Graduate School of Medical Science; Rosario Notaro, National Institute for Cancer Research (IST); Keiya Ozawa, Professor and Chairman, Division of Hematology, Department of Medicine, Division of Cell Transplantation and Transfusion, Division of Genetic Therapeutics, Center for Molecular Medicine, Jichi Medical School; Andrew Rawstron, Haematological Malignancy Diagnostic Service, Leeds General Infirmary; Stephen Richards, Haematological Malignancy Diagnostic Service, Leeds General Infirmary; Antonio M. Risitano, Division of Hematology, Federico II University, Naples; Wendell F. Rosse, Duke University; Russell P. Rother, Alexion Pharmaceuticals Inc; Bruno Rotoli, Federico II University, Naples; Hubert Schrezenmeier, Institute for Clinical Transfusion Medicine and Immunogenetics; Joerg Schubert, Internal Medicine I, Saarland University Medical School; Tsutomu Shichishima, First Department of Internal Medicine, Fukushima Medical University; Elaine M. Sloand, National Heart, Lung, and Blood Institute, National Institutes of Health; Chiharu Sugimori, Cellular Transplantation Biology, Kanazawa University Graduate School of Medical Science; Akiyoshi Takami, Cellular Transplantation Biology, Kanazawa University Graduate School of Medical Science; David B. Wilson, Department of Pediatrics, Division of Hematology-Oncology, Washington University School of Medicine, St Louis; Paul Woodard, Hematology/Oncology, Division of Stem Cell Transplantation, St Jude Children's Research Hospital.

- determinants on decay-accelerating factor. *Vox Sang*. 1989;56:205-211.
8. Hillmen P, Lewis SM, Bessler M, Luzzatto L, Dacie JV. Natural history of paroxysmal nocturnal hemoglobinuria. *N Engl J Med*. 1995;333:1253-1258.
  9. Moyo VM, Mukina GL, Barrett ES, Brodsky RA. Natural history of paroxysmal nocturnal hemoglobinuria using modern diagnostic assays. *Br J Haematol*. 2004;126:133-138.
  10. Hall C, Richards S, Hillmen P. Primary prophylaxis with warfarin prevents thrombosis in paroxysmal nocturnal hemoglobinuria (PNH). *Blood*. 2003;102:3587-3591.
  11. Nishimura JI, Kanakura Y, Ware RE, et al. Clinical course and flow cytometric analysis of paroxysmal nocturnal hemoglobinuria in the United States and Japan. *Medicine (Baltimore)*. 2004;83:193-207.
  12. Rosse WF. The life-span of complement-sensitive and -insensitive red cells in paroxysmal nocturnal hemoglobinuria. *Blood*. 1971;37:556-562.
  13. Brubaker LH, Essig LJ, Mengel CE. Neutrophil life span in paroxysmal nocturnal hemoglobinuria. *Blood*. 1977;50:657-662.
  14. Nakao S, Wang H, Chuhjo T. Clinical significance of increased PNH-type cells in the peripheral blood of patients with aplastic anemia and refractory anemia. In: Omine M, Kinoshita T, eds. *Paroxysmal Nocturnal Hemoglobinuria and Related Disorders: Molecular Aspects of Pathogenesis*. Tokyo: Springer; 2003:129-138.
  15. Dunn DE, Tanawattanacharoen P, Bocconi P, et al. Paroxysmal nocturnal hemoglobinuria cells in patients with bone marrow failure syndromes. *Ann Intern Med*. 1999;131:401-408.
  16. Diep DB, Nelson KL, Raja SM, Pleshak EN, Buckley JT. Glycosylphosphatidylinositol anchors of membrane glycoproteins are binding determinants for the channel-forming toxin aerolysin. *J Biol Chem*. 1998;273:2355-2360.
  17. Brodsky RA, Mukhina GL, Nelson KL, Lawrence TS, Jones RJ, Buckley JT. Resistance of paroxysmal nocturnal hemoglobinuria cells to the glycosylphosphatidylinositol-binding toxin aerolysin. *Blood*. 1999;93:1749-1756.
  18. Brodsky RA, Mukhina GL, Li S, et al. Improved detection and characterization of paroxysmal nocturnal hemoglobinuria using fluorescent aerolysin. *Am J Clin Pathol*. 2000;114:459-466.
  19. Mukhina GL, Buckley JT, Barber JP, Jones RJ, Brodsky RA. Multilineage glycosylphosphatidylinositol anchor-deficient haematopoiesis in untreated aplastic anaemia. *Br J Haematol*. 2001;115:476-482.
  20. Parker CJ. Historical aspects of paroxysmal nocturnal hemoglobinuria: 'defining the disease'. *Br J Haematol*. 2002;117:3-22.
  21. Prince GM, Nguyen M, Lazarus HM, Brodsky RA, Terstappen LW, Medof ME. Peripheral blood harvest of unaffected CD34<sup>+</sup> CD38<sup>-</sup> hematopoietic precursors in paroxysmal nocturnal hemoglobinuria. *Blood*. 1995;86:3381-3386.
  22. Lewis SM, Dacie JV. The aplastic anaemia-paroxysmal nocturnal hemoglobinuria syndrome. *Br J Haematol*. 1967;13:236-251.
  23. Young NS, Maciejewski JP, Sloan E, et al. The enigma of aplastic anemia/PNH syndrome. In: Omine M, Kinoshita T, eds. *Paroxysmal Nocturnal Hemoglobinuria and Related Disorders*. Tokyo: Springer; 2003:149-158.
  24. Griscelli-Bennaceur A, Gluckman E, Scrobhaci ML, et al. Aplastic anemia and paroxysmal nocturnal hemoglobinuria: search for a pathogenetic link. *Blood*. 1995;85:1354-1363.
  25. Meletis J, Terpos E, Samarkos M, et al. Red cells with paroxysmal nocturnal hemoglobinuria phenotype in patients with acute leukemia. *Hematology*. 2002;7:69-74.
  26. Meletis J, Terpos E, Samarkos M, et al. Detection of CD55- and/or CD59-deficient red cell populations in patients with plasma cell dyscrasias. *Int J Hematol*. 2002;75:40-44.
  27. Harada H, Mori H, Niikura H, Omine M. Paroxysmal nocturnal hemoglobinuria in association with chronic myelofibrosis. In: Omine M, Kinoshita T, ed. *Paroxysmal Nocturnal Hemoglobinuria and Related Disorders: Molecular Aspects of Pathogenesis*. Tokyo: Springer; 2003:251-254.
  28. Araten DJ, Swirsky D, Karadimitris A, et al. Cytogenetic and morphological abnormalities in paroxysmal nocturnal hemoglobinuria. *Br J Haematol*. 2001;115:360-368.
  29. Sloan EM, Fuhrer M, Keyvanfar K, et al. Cytogenetic abnormalities in paroxysmal nocturnal hemoglobinuria usually occur in hematopoietic cells that are glycosylphosphatidylinositol-anchored protein (GPI-AP) positive. *Br J Haematol*. 2003;123:173-176.
  30. Takeda J, Miyata T, Kawagoe K, et al. Deficiency of the GPI anchor caused by a somatic mutation of the PIG-A gene in paroxysmal nocturnal hemoglobinuria. *Cell*. 1993;73:703-711.
  31. Luzzatto L, Nafa K. Genetics of PNH. In: Young NS, Moss J, eds. *Paroxysmal Nocturnal Hemoglobinuria and the Glycosylphosphatidylinositol-Linked Proteins*. San Diego, CA: Academic Press; 2000:21-47.
  32. Gundry CN, Vandersteen JG, Reed GH, Pryor RJ, Chen J, Wittwer CT. Amplicon melting analysis with labeled primers: a closed-tube method for differentiating homozygotes and heterozygotes. *Clin Chem*. 2003;49:396-406.
  33. Millward H, Samowitz W, Wittwer CT, Bernard PS. Homogeneous amplification and mutation scanning of the p53 gene using fluorescent melting curves. *Clin Chem*. 2002;48:1321-1328.
  34. Wittwer CT, Reed GH, Gundry CN, Vandersteen JG, Pryor RJ. High-resolution genotyping by amplicon melting analysis using LCGreen. *Clin Chem*. 2003;49:853-860.
  35. Rosse WF. Paroxysmal nocturnal hemoglobinuria—present status and future prospects. *West J Med*. 1980;132:219-228.
  36. Endo M, Ware RE, Vreeke TM, et al. Molecular basis of the heterogeneity of expression of glycosyl phosphatidylinositol anchored proteins in paroxysmal nocturnal hemoglobinuria. *Blood*. 1996;87:2546-2557.
  37. Holguin MH, Wilcox LA, Bernshaw NJ, Rosse WF, Parker CJ. Relationship between the membrane inhibitor of reactive lysis and the erythrocyte phenotypes of paroxysmal nocturnal hemoglobinuria. *J Clin Invest*. 1989;84:1387-1394.
  38. Clark DA, Butler SA, Braren V, Hartmann RC, Jenkins DE Jr. The kidneys in paroxysmal nocturnal hemoglobinuria. *Blood*. 1981;57:83-89.
  39. Rosse WF. Treatment of paroxysmal nocturnal hemoglobinuria. *Blood*. 1982;60:20-23.
  40. Hartmann RC, Jenkins DE Jr, McKee LC, Heyssel RM. Paroxysmal nocturnal hemoglobinuria: clinical and laboratory studies relating to iron metabolism and therapy with androgen and iron. *Medicine (Baltimore)*. 1966;45:331-363.
  41. Rosse WF. Paroxysmal nocturnal hemoglobinuria. In: Hoffman R, Benz EJ, Shattil SJ, et al, eds. *Hematology: Basic Principles and Practice* (3rd ed). New York: Churchill Livingstone; 2000:331-342.
  42. Hillmen P, Hall C, Marsh JC, et al. Effect of eculizumab on hemolysis and transfusion requirements in patients with paroxysmal nocturnal hemoglobinuria. *N Engl J Med*. 2004;350:552-559.
  43. Zhao M, Shao Z, Li K, et al. Clinical analysis of 78 cases of paroxysmal nocturnal hemoglobinuria diagnosed in the past ten years. *Chin Med J (Engl)*. 2002;115:398-401.
  44. Bourantas K. High-dose recombinant human erythropoietin and low-dose corticosteroids for treatment of anemia in paroxysmal nocturnal hemoglobinuria. *Acta Haematol*. 1994;91:62-65.
  45. Issaragrisil S, Piankijagum A, Tang-naitrisorana Y. Corticosteroids therapy in paroxysmal nocturnal hemoglobinuria. *Am J Hematol*. 1987;25:77-83.
  46. Brecher ME, Taswell HF. Paroxysmal nocturnal hemoglobinuria and the transfusion of washed red cells: a myth revisited. *Transfusion*. 1989;29:681-685.
  47. Parker CJ. An overview of the development of specific inhibitors of complement: opportunities for therapy of paroxysmal nocturnal hemoglobinuria. In: Omine M, Kinoshita T, eds. *Paroxysmal Nocturnal Hemoglobinuria and Related Disorders: Molecular Aspects of Pathogenesis*. Tokyo: Springer; 2003:11-23.
  48. Socie G, Mary JY, de Gramont A, et al. Paroxysmal nocturnal hemoglobinuria: long-term follow-up and prognostic factors. *French Society of Haematology. Lancet*. 1996;348:573-577.
  49. Storb R, Evans RS, Thomas ED, et al. Paroxysmal nocturnal hemoglobinuria and refractory marrow failure treated by marrow transplantation. *Br J Haematol*. 1973;24:743-750.
  50. Antin JH, Ginsburg D, Smith BR, Nathan DG, Orkin SH, Rapoport JM. Bone marrow transplantation for paroxysmal nocturnal hemoglobinuria: eradication of the PNH clone and documentation of complete lymphohematopoietic engraftment. *Blood*. 1985;66:1247-1250.
  51. Appelbaum FR, Fefer A, Cheever MA, et al. Treatment of aplastic anemia by bone marrow transplantation in identical twins. *Blood*. 1980;55:1033-1039.
  52. Bemba M, Guardiola P, Garderet L, et al. Bone marrow transplantation for paroxysmal nocturnal hemoglobinuria. *Br J Haematol*. 1999;105:366-368.
  53. Cho SG, Lim J, Kim Y, et al. Conditioning with high-dose cyclophosphamide may not be sufficient to provide a long-term remission of paroxysmal nocturnal hemoglobinuria following syngeneic peripheral blood stem cell transplantation. *Bone Marrow Transplant*. 2001;28:987-988.
  54. de Souza MH, Abdelhay E, Silva ML, et al. Late marrow allograft rejection following alpha-interferon therapy for hepatitis in a patient with paroxysmal nocturnal hemoglobinuria. *Bone Marrow Transplant*. 1992;9:495-497.
  55. Doukas MA, Fleming D, Jennings D. Identical twin marrow transplantation for venous thrombosis in paroxysmal nocturnal hemoglobinuria; long-term complete remission as assessed by flow cytometry. *Bone Marrow Transplant*. 1998;22:717-721.
  56. Endo M, Beatty PG, Vreeke TM, Wittwer CT, Singh SP, Parker CJ. Syngeneic bone marrow transplantation without conditioning in a patient with paroxysmal nocturnal hemoglobinuria: in vivo evidence that the mutant stem cells have a survival advantage. *Blood*. 1996;88:742-750.
  57. Fefer A, Freeman H, Storb R, et al. Paroxysmal nocturnal hemoglobinuria and marrow failure treated by infusion of marrow from an identical twin. *Ann Intern Med*. 1976;84:692-695.
  58. Flotho C, Strahm B, Kontry U, et al. Stem cell transplantation for paroxysmal nocturnal hemoglobinuria in childhood. *Br J Haematol*. 2002;118:124-127.
  59. Graham ML, Rosse WF, Halperin EC, Miller CR, Ware RE. Resolution of Budd-Chiari syndrome following bone marrow transplantation for paroxysmal nocturnal hemoglobinuria. *Br J Haematol*. 1996;92:707-710.
  60. Grosskreutz C, Ross V, Scigliano E, Fruchtman S, Isola L. Low-dose total body irradiation, fludarabine, and antithymocyte globulin conditioning for nonmyeloablative allogeneic transplantation. *Biol Blood Marrow Transplant*. 2003;9:453-459.
  61. Hegenbart U, Niederwieser D, Forman S, et al. Hematopoietic cell transplantation from related and unrelated donors after minimal conditioning

- as a curative treatment modality for severe paroxysmal nocturnal hemoglobinuria. *Biol Blood Marrow Transplant*. 2003;9:689-697.
62. Hershko C, Gale RP, Ho WG, Cline MJ. Cure of aplastic anaemia in paroxysmal nocturnal haemoglobinuria by marrow transfusion from identical twin: failure of peripheral-leucocyte transfusion to correct marrow aplasia. *Lancet*. 1979;1:945-947.
  63. Jehn U, Sauer H, Kolb HJ, et al. Bone marrow transplantation in adults in acute leukemia, aplastic anemia and paroxysmal nocturnal hemoglobinuria. Results of the Medical Clinic III of LMU (Ludwig-Maximilians University) Munich [in German]. *Klin Wochenschr*. 1983;61:321-328.
  64. Kawahara K, Witherspoon RP, Storb R. Marrow transplantation for paroxysmal nocturnal hemoglobinuria. *Am J Hematol*. 1992;39:283-288.
  65. Kolb HJ, Holler E, Bender-Gotze C, et al. Myeloablative conditioning for marrow transplantation in myelodysplastic syndromes and paroxysmal nocturnal hemoglobinuria. *Bone Marrow Transplant*. 1989;4:29-34.
  66. Lee JL, Lee JH, Choi SJ, et al. Allogeneic hematopoietic cell transplantation for paroxysmal nocturnal hemoglobinuria. *Eur J Haematol*. 2003;71:114-118.
  67. Raiola AM, Van Lint MT, Lamparelli T, et al. Bone marrow transplantation for paroxysmal nocturnal hemoglobinuria. *Haematologica*. 2000;85:59-62.
  68. Shaw PH, Haut PR, Olszewski M, Kletzel M. Hematopoietic stem-cell transplantation using unrelated cord-blood versus matched sibling marrow in pediatric bone marrow failure syndrome: one center's experience. *Pediatr Transplant*. 1999;3:315-321.
  69. Suenaga K, Kanda Y, Niiya H, et al. Successful application of nonmyeloablative transplantation for paroxysmal nocturnal hemoglobinuria. *Exp Hematol*. 2001;29:639-642.
  70. Szer J, Deeg HJ, Witherspoon RP, et al. Long-term survival after marrow transplantation for paroxysmal nocturnal hemoglobinuria with aplastic anemia. *Ann Intern Med*. 1984;101:193-195.
  71. Takahashi Y, McCoy JP Jr, Carvallo C, et al. In vitro and in vivo evidence of PNH cell sensitivity to immune attack after nonmyeloablative allogeneic hematopoietic cell transplantation. *Blood*. 2004;103:1383-1390.
  72. Woodard P, Wang W, Pitts N, et al. Successful unrelated donor bone marrow transplantation for paroxysmal nocturnal hemoglobinuria. *Bone Marrow Transplant*. 2001;27:589-592.
  73. Sloand EM, Young NS. Thrombotic complications in PNH. In: Young NS, Moss J, eds. *Paroxysmal Nocturnal Hemoglobinuria and the Glycosylphosphatidylinositol-Linked Proteins*. San Diego, CA: Academic Press; 2000:101-112.
  74. Fujioka S, Takayoshi T. Prognostic features of paroxysmal nocturnal hemoglobinuria in Japan. *Acta Haematol Japan*. 1989;52:1386-1394.
  75. Le XF, Yang TY, Yang XY, Wang XM. Characteristics of paroxysmal nocturnal hemoglobinuria in China: clinical analysis of 476 cases. *Chin Med J (Engl)*. 1990;103:885-889.
  76. Gongora Bianchi RA. Paroxysmal nocturnal hemoglobinuria: the Mexican experience. *Rev Invest Clin*. 1997;49:85S-88S.
  77. McMullin MF, Hillmen P, Jackson J, Ganly P, Luzzatto L. Tissue plasminogen activator for hepatic vein thrombosis in paroxysmal nocturnal hemoglobinuria. *J Intern Med*. 1994;235:85-89.
  78. Sholar PW, Bell WR. Thrombolytic therapy for inferior vena cava thrombosis in paroxysmal nocturnal hemoglobinuria. *Ann Intern Med*. 1985;103:539-541.
  79. Griffith JF, Mahmoud AE, Cooper S, Elias E, West RJ, Olliff SP. Radiological intervention in Budd-Chiari syndrome: techniques and outcome in 18 patients. *Clin Radiol*. 1996;51:775-784.
  80. Ray JG, Burrows RF, Ginsberg JS, Burrows EA. Paroxysmal nocturnal hemoglobinuria and the risk of venous thrombosis: review and recommendations for management of the pregnant and nonpregnant patient. *Haemostasis*. 2000;30:103-117.
  81. Tichelli A, Socie G, Marsh J, et al. Outcome of pregnancy and disease course among women with aplastic anemia treated with immunosuppression. *Ann Intern Med*. 2002;137:164-172.
  82. Ware RE, Hall SE, Rosse WF. Paroxysmal nocturnal hemoglobinuria with onset in childhood and adolescence. *N Engl J Med*. 1991;325:991-996.
  83. van den Heuvel-Eibrink MM, Bredius RG, te Winkel ML, et al. Childhood paroxysmal nocturnal haemoglobinuria (PNH), a report of 11 cases in the Netherlands. *Br J Haematol*. 2005;128:571-577.
  84. Parker CJ, Ware RE. Paroxysmal nocturnal hemoglobinuria. In: Greer JP, Foerster J, Lukens JN, Rodgers GM, Paraskevas F, Glader BE, eds. *Wintrobe's Clinical Hematology*. 11th ed. Philadelphia, PA: Lippincott Williams & Wilkins; 2004:1203-1221.
  85. Murray JA, Ledlow A, Launspach J, Evans D, Loveday M, Conklin JL. The effects of recombinant human hemoglobin on esophageal motor functions in humans. *Gastroenterology*. 1995;109:1241-1248.
  86. Bortolotti M, Mari C, Lopilato C, Porrazzo G, Miglioli M. Effects of sildenafil on esophageal motility of patients with idiopathic achalasia. *Gastroenterology*. 2000;118:253-257.
  87. Bortolotti M, Pandolfo N, Giovannini M, Mari C, Miglioli M. Effect of sildenafil on hypertensive lower oesophageal sphincter. *Eur J Clin Invest*. 2002;32:682-685.
  88. Eherer AJ, Schwetz I, Hammer HF, et al. Effect of sildenafil on oesophageal motor function in healthy subjects and patients with oesophageal motor disorders. *Gut*. 2002;50:758-764.
  89. Kruatrachue M, Wasi P, Na-Nakorn S. Paroxysmal nocturnal haemoglobinuria in Thailand with special reference to its association with aplastic anaemia. *Br J Haematol*. 1978;39:267-276.
  90. Araten DJ, Thaler HT, Luzzatto L. High incidence of thrombosis in African-American and Latin-American patients with paroxysmal nocturnal hemoglobinuria. *Thromb Haemost*. 2005;93:88-91.